

Nam Phay (Phai) Dam Hydropower info by Hobo Maps - [Home](#) [Go Back to Hydropower Web Page](#)

Nam Phay Hydropower Project is sometimes spelled Nam Phai.

Nam Phay hydropower project is located in Longchieng (Longtieng) district of Xaysomboun province. The project is a medium-scale inter-basin diversion project. The dam site is located in a valley upstream of the Nam Phay (river), a tributary of the Nam Ngum (river).

The project started construction in 2014 and commercial operation began Nov. 2017 under a 25 year concession agreement with government of Lao PDR.

**Nam Phay / Nam Phai Dam image below:**



**Nam Phay Powerhouse below:**



The total investment of the project is about US \$218 million. China-based Norinco International Cooperation Ltd. (Norinco) owns 85% of the project and Electricite du Lao (EDL) owns the remaining 15%.

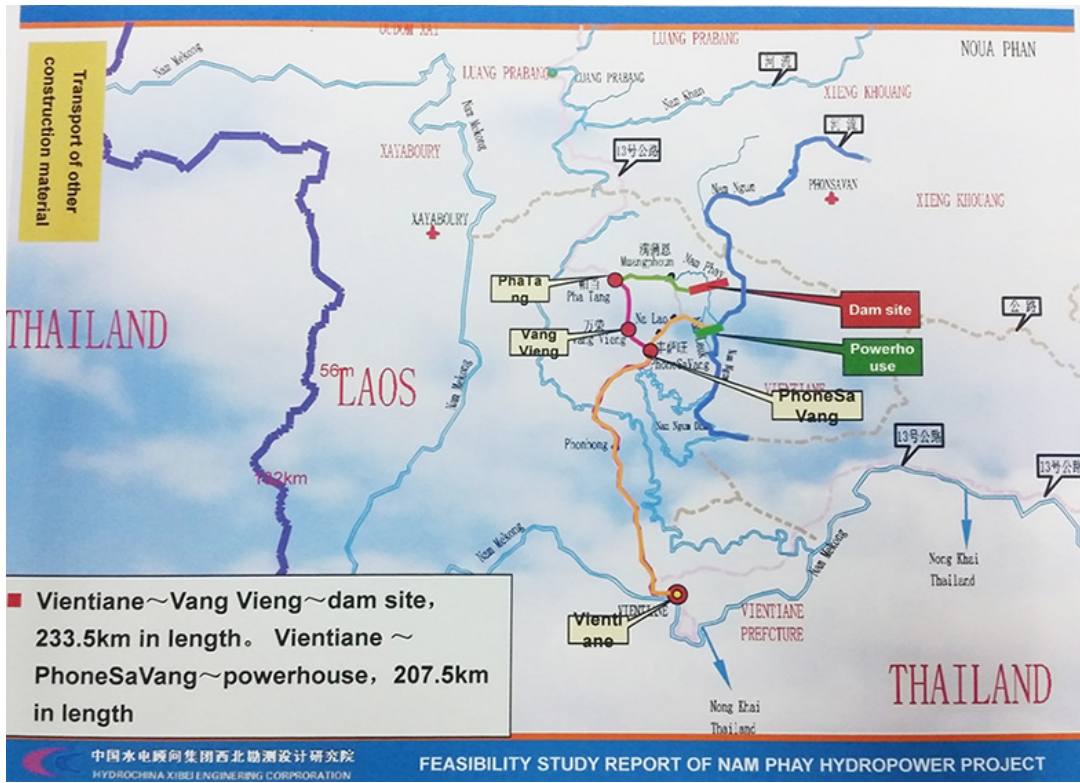
Nam Phay Power Company Ltd. is responsible for construction and will operate the project. The project contractor is PowerChina Resources Ltd, a branch of Power Construction Corporation of China.

The Nam Phay Hydropower Project is an interbasin diversion project with a 700 meter head. It includes a concrete-face rock-filled dam that impounds Nam Phay (river) creating a reservoir with a surface area of 8.92 square km.

The powerhouse is located on the right bank of Nam Louk (river) and contains two 43 MW Pelton turbines (86 MW total) that send power through a 115-kV transmission line to Thongkhoun II substation. Its projected annual power output is 419 GWh.

All the electricity produced is planned to be sold to EDL for distribution to Xaysomboun and Xieng Khuang provinces.

Nam Phay Hydropower Project sites shown in map below:



Nam Phay dam reservoir image below:



Nam Phay dam image below:



Nam Phay dam intake area view below:



Nam Phay dam intake structure image below:



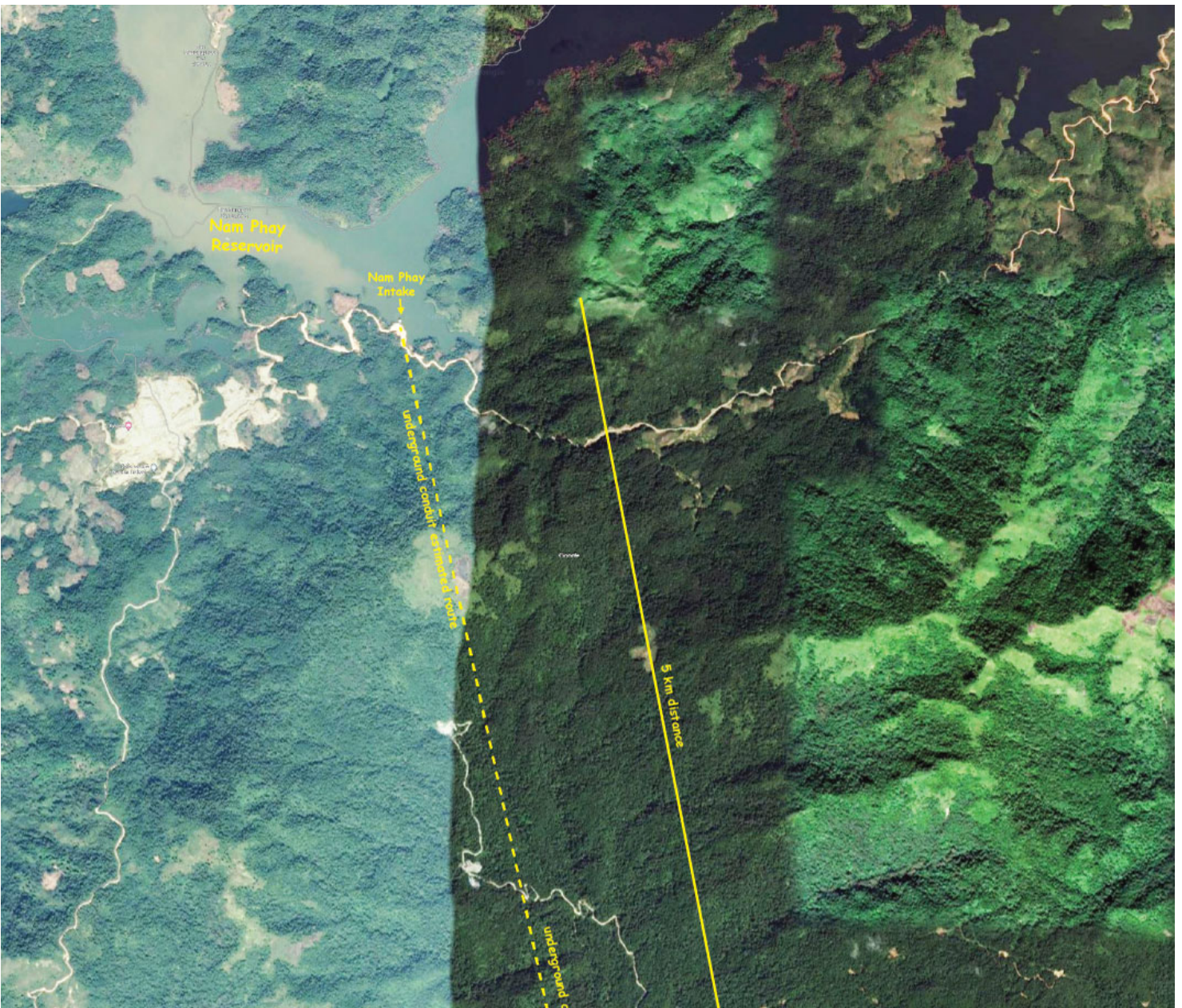
Nam Phay dam intake tunnel image below during construction:



Nam Phay powerhouse image below:



Nam Phay hydropower project layout image below. The powerhouse is over 6 km south of the reservoir intake structure and we are assuming there must be an underground conduit connecting them although we haven't seen any info confirming this. The powerhouse has been confirmed as being on the right bank of the Nam Leuk (Louk) river south of the reservoir.





Nam Phay reservoir is located at coordinates 19°05'51.6"N 102°42'53.0"E (19.097663, 102.714718).



Image below looks like the construction site for the Nam Phay dam but we can't actually see the dam structure.



Nam Phay intake structure image below:



Nam Phay power plant images below at coordinates 19°02'00.0"N 102°44'39.4"E (19.033333, 102.744280).



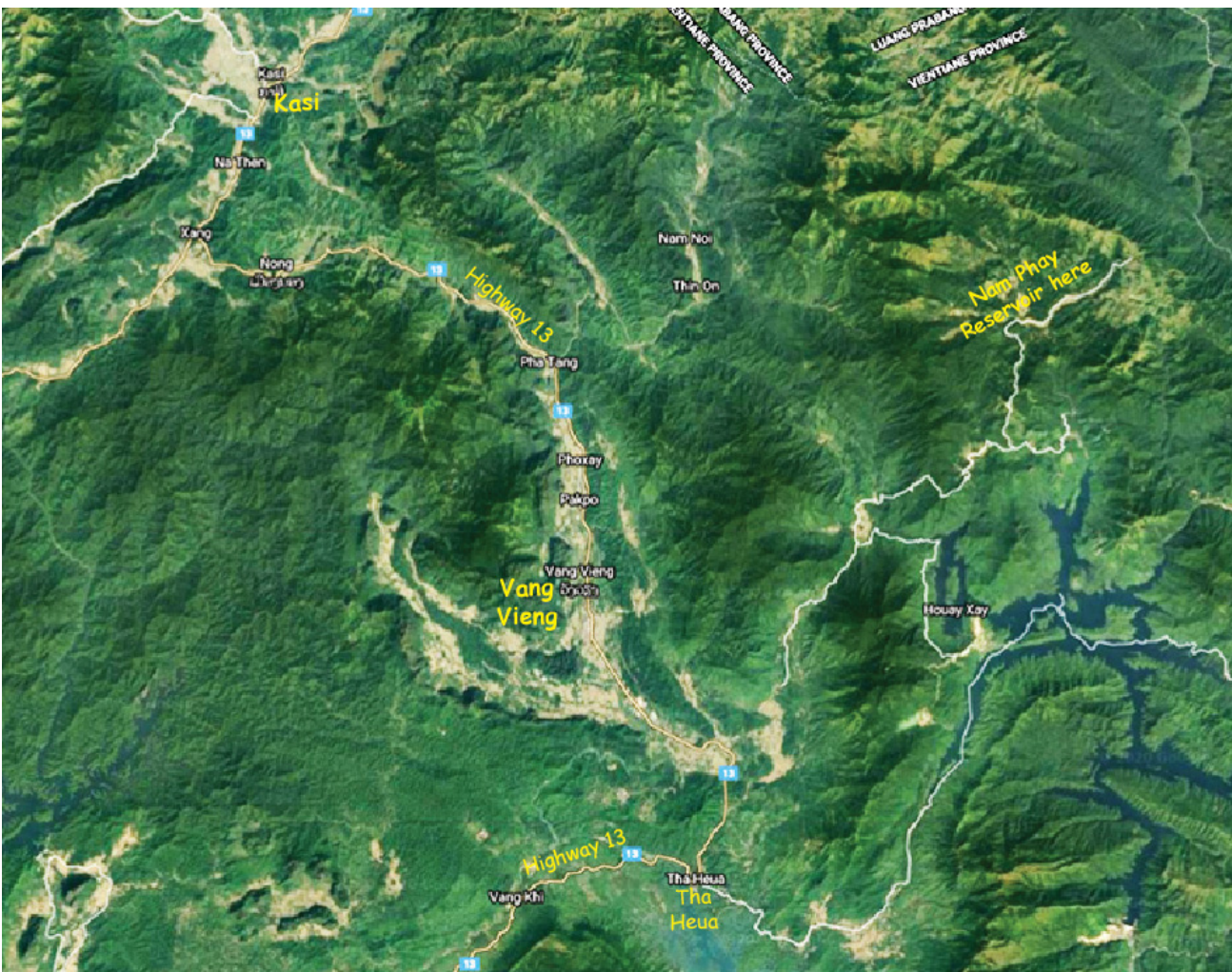




**Nam Phay Dam community image below:**



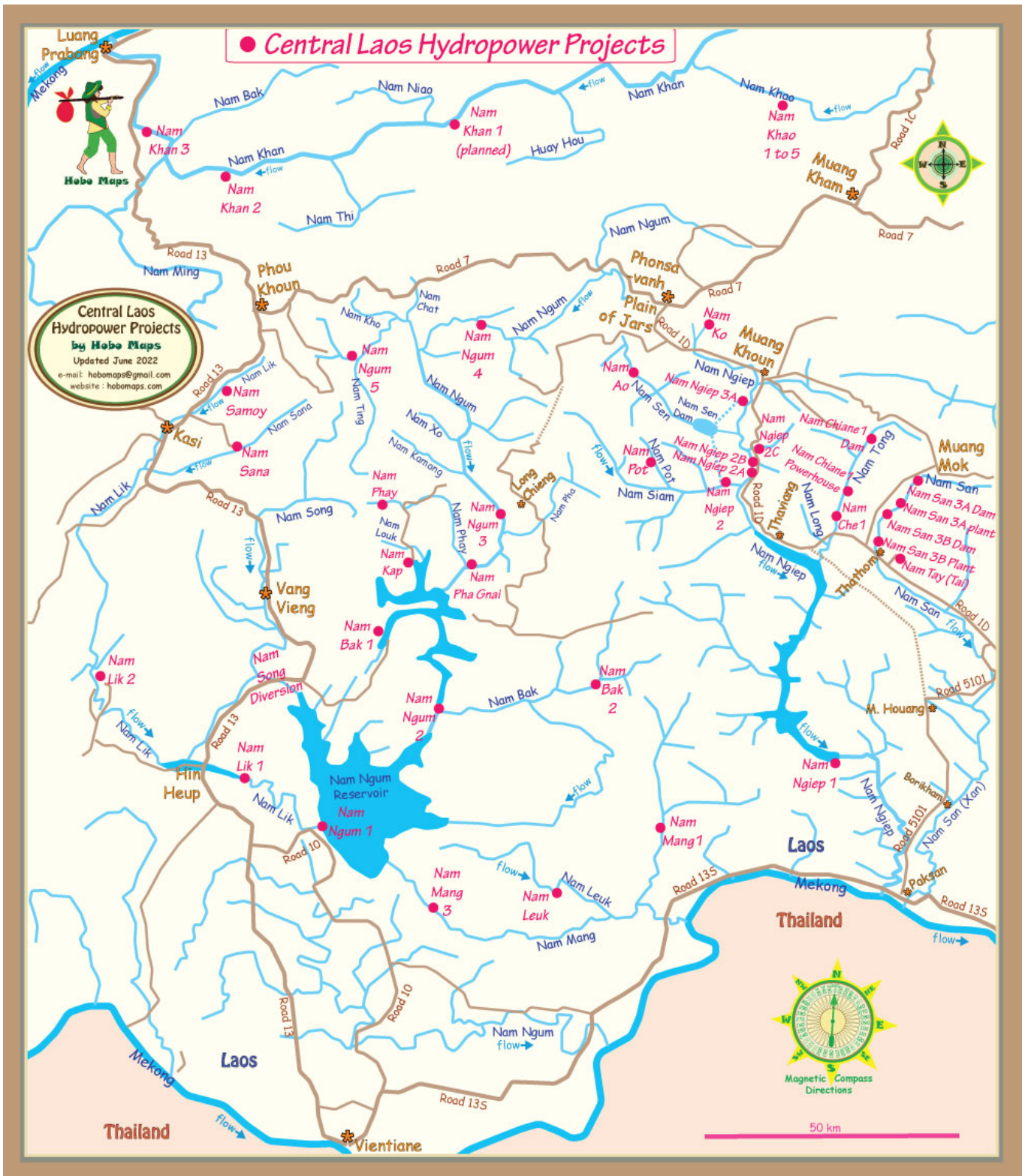
Nam Phay Dam reservoir location shown on satellite image below before impoundment:



Nam Phay Reservoir and access Road 9308 image below:



**Nam Phay dam shown in central part of map below - the Powerhouse is below it on Nam Louk:**



The Nam Phay hydropower project has qualified as a greenhouse-gas-reducing Clean Development Mechanism (CDM) project under the Kyoto Protocol and has a 7-year renewable crediting period. Estimated CO2 emission reductions during this crediting period are 222,121 tons per year.

Click [HERE](#) to view/download CDM application PDF file.

